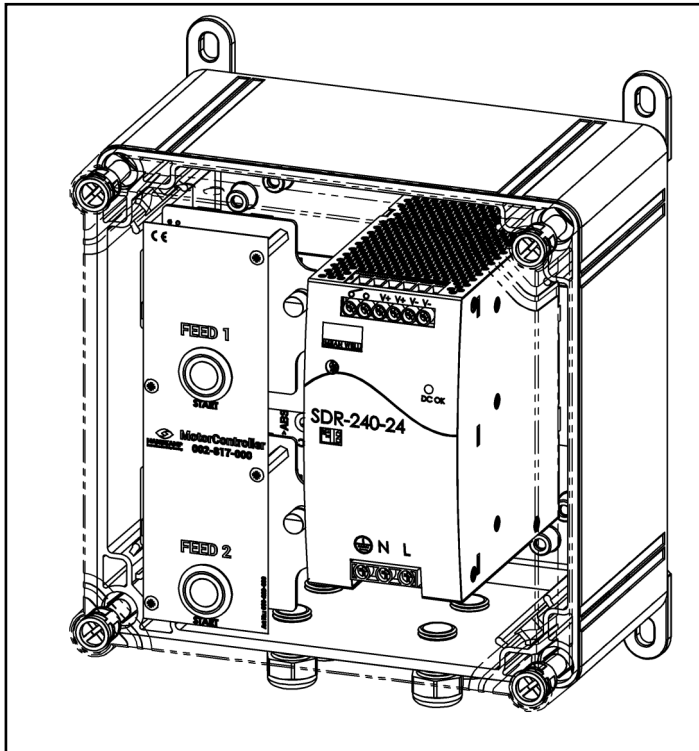


MotorController

incl. SmartPanel

002-816-000 up to 002-819-000



Besturingseenheid voor HighSpeed Feeders

Control Unit for HighSpeed Feeders

Steuereinheit für HighSpeed Feeders

L'unité de commande HighSpeed Feeders

Installation and operating instructions

EN

Article number: 010-105-000

Date: December 2025

Version 1.7 - Translation of original Instructions for use

According to Annex 1 chapter 1.7.4 Machine guideline 2006/42/EG



HANSKAMP

Innovation for dairy farming

Wehl,

The Netherlands

www.hanskamp.com

Preface

Manual Contents

This manual contains the information necessary for the correct installation and operation of a Hanskamp MotorController.

Study and understand this information thoroughly before configuration of the MotorController. Failure to do so could result in damage to equipment. Please consult your milking equipment dealer if you do not understand the information in this manual, or if you need additional information. All information in this manual has been compiled with care. Hanskamp shall not be liable for errors or faults in this manual. The recommendations are meant to serve as guidelines. All instructions, pictures and specifications in this manual are based on the latest information that was available at the time of publication. Your MotorController may comprise improvements, features or options that are not covered in this manual.

Applicability

The table below shows the type numbers of the MotorController for which this manual is applicable.

Model designation

Model	Type number
MotorController 1 feed type	002-816-000
MotorController 2 feed types	002-817-000
MotorController 3 feed types	002-818-000
MotorController 4 feed types	002-819-000

Contact number Local Service Provider

We suggest you write the name, address and telephone number of your local service provider contact in the table below. This makes sure you can easily find the information.

Name	
Address	
Telephone number	
E-mail address	

1. Introduction

The MotorController of Hanskamp is a control unit that can be used to control several types of feeding systems by Hanskamp, such as the PipeFeeder HighSpeed, and the Multi-Dos HighSpeed feeding dosators, for example in milking parlours/carrousel, as well as in automatic feeding systems. The MotorController is driven by a 24VDC 10A power supply. The amount of pellets which is communicated by the MotorController to the dosator, is controlled by the feeding system. A maximum of 4 feed types can be controlled by the MotorController.

The information in this manual is for farmers and technicians.

- Dairy farmers use the information to test and adjust the MotorController
- Technicians use the information to install and setup the MotorController.

2. Safety

2.1 Introduction

The safety alert symbol identifies important safety messages on your MotorController and in the manual. When you see this symbol, be alert to the possibility of personal injury or death. Follow the instruction of the safety message.



Safety Alert Symbol

2.2 Signal Words

Note the use of the signal words DANGER, WARNING and CAUTION with the safety messages. The signal word for each message uses the following guidelines:



Warning! Indicates a potentially hazardous situation that, if not avoided, could result in death or serious injury, and includes hazards that are exposed when guards are removed.



Danger! Indicates a imminently hazardous situation that, if not avoided, will result in death or serious injury.

2.3 Safety Instructions

YOU are responsible for the SAFE operation and maintenance of your MotorController. YOU must make sure that you and anyone else who is going to operate, maintain or work in the vicinity of the MotorController knows all the related SAFETY information in this manual.

YOU are the key to safety. Good safety practices protect you and the people around you. Make these practices a working part of your safety program. Make sure EVERYONE who operates, maintains or works near the MotorController obeys the safety precautions. Do not risk injury or death by ignoring good safety practices.

- MotorController owners must train operators before they operate the MotorController. This training must be repeated at least annually.
- The operator must read, understand and obey all safety and operating instructions in the manual.
- A person who has not read and understood all safety and operating instructions is not permitted to operate the MotorController.
- Do not modify the equipment in any way. Unauthorized modification may impair the function and/or safety and could affect the life of the equipment, and persons.
- Only use approved spare parts, and make sure they are only installed by authorized technicians.

2.3.1 General Safety

- Read and understand the manual and all safety signs before you connect power supplies to operate or adjust the MotorController.
- Only trained persons are permitted to operate the MotorController. A first-aid kit must be available near the MotorController. Store in a highly visible place.
- A carbon dioxide or foam fire extinguisher must be available near the MotorController. Store the fire extinguisher in a highly visible place.
- Install all protective covers and guards before you operate the MotorController.
- Wear the correct protective clothing and equipment. Disconnect and isolate the electrical power supply before you clean or do maintenance on the MotorController.
- Know the emergency medical centre number for your area.
- Contact your nearest milking equipment dealer provider if you have any questions
- Review safety related items with all operators frequently (annually).

2.3.2 Electrical Safety

- Only an authorized electrician must install the electrical power supply for the MotorController.
- Make sure the electrical grounding of the electrical system and all parts of the MotorController meet the local rules and regulations.
- Replace any damaged electrical lines, conduits, switches and components immediately.
- Isolate the electrical power supply before you open the MotorController to work on the electrical system.

2.3.3 Installation Safety

- Read and understand the instructions in this manual.
- Make sure the MotorController is correctly installed.

2.3.4 Operating Safety

- Read and understand the applicable manual and all safety signs before you connect power supplies to operate or adjust the MotorController.
- Only trained persons are permitted to operate the MotorController.
- Switch off the electrical power supply by taking plug out of the power point and secure the plug before you clean or do maintenance on the MotorController.
- Install the covers and guards before you operate the MotorController.
- Keep hands, feet, hair and clothing away from all the electrical parts.
- Keep unauthorized persons, especially small children away from the MotorController at all times.
- Before the electrical supply is attached to the MotorController, make sure all parts are tight and that all the parts are in good condition.
- Contact your nearest milking equipment dealer if you have any questions.

2.3.5 Maintenance Safety

- Read and understand the applicable manual and all safety signs before you connect power supplies to operate or adjust the MotorController.
- Only trained persons are permitted to maintain the MotorController.
- Switch off the electrical power supply by taking plug out of the power point and secure the plug before you clean or do maintenance on the MotorController.
- Wear protective clothing and safety goggles when you do work on the pneumatic system.
- Make sure all the covers and guards are installed when maintenance work is complete.

2.3.6 Safety Decals

- General safety messages appear in this safety messages section. Specific safety messages are in applicable parts of this manual when potential hazards may occur if the instructions or procedures are not followed.

3. Installation instruction

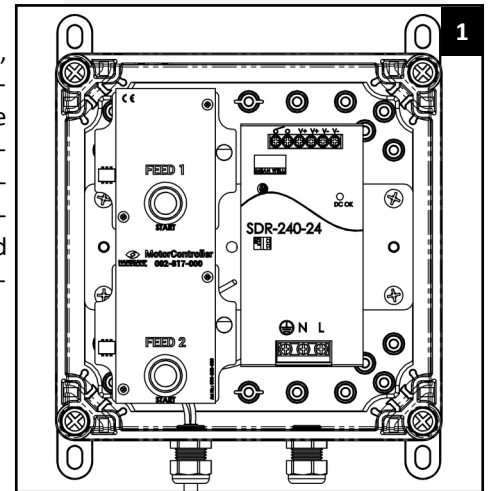
General description:

The MotorController of Hanskamp (fig. 1) is a housing that encloses a power supply, as well as up to 4 SmartPanels, each controlling 1 feed type output. The MotorController is used as a control unit for several Hanskamp feeding systems, and can be applied in for example milking parlours/carrousel, as well in automatic feeding systems. The MotorController is powered by a 24VDC 10A power supply. The MotorController has a maximum capacity of 4 feedtype outputs. This installation instruction will guide you through the installation of the MotorController. Please read the whole installation instructions and keep the safety instructions in mind. Examples for mounting are available at www.hanskamp.nl/en

Order numbers and names of product parts are shown in annex 1 and 2.

Transport and storage.

The MotorController will be stored in a tape-sealed box. The inside of the box is covered with protection foil to prevent the MotorController from damage. The storage of the MotorController will also be handled in this way.



Warning! Always move the box very carefully!

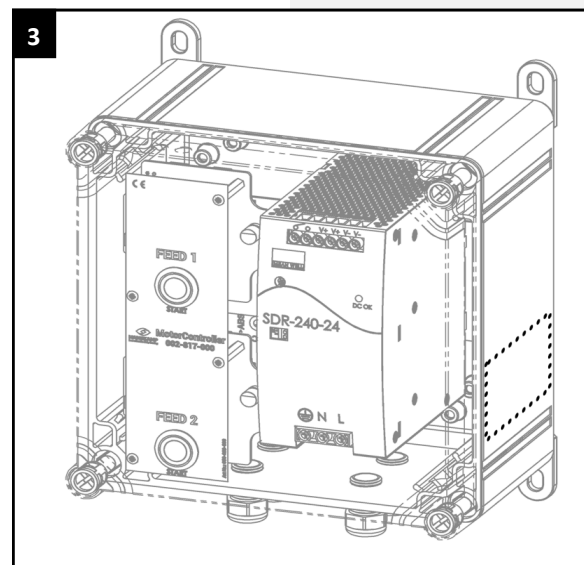
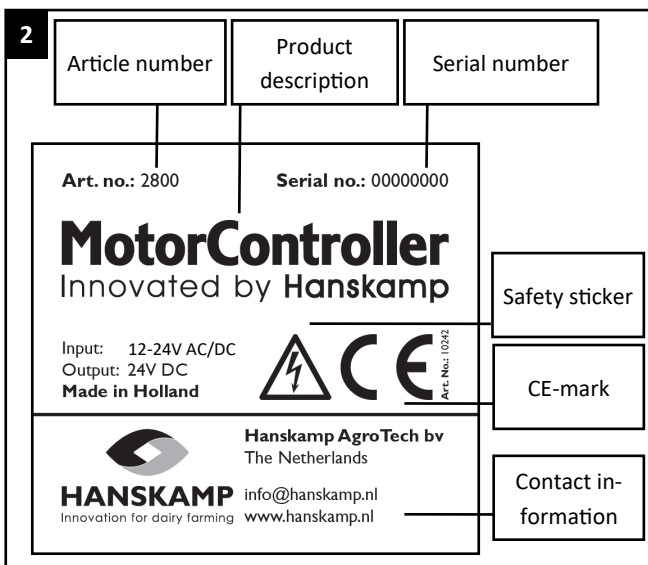


Warning! When unpacking the box there are different parts that may fall out of the box! Always keep the box upright, with the opening facing upwards!

Warning! Watch out for damages or loose ends that could cause injuries.

Safety stickers:

The user and installer are responsible for the safe operation and maintenance of the MotorController. Safety stickers are used to ensure safety in and around the MotorController. On the MotorController, a single combined safety sticker is used (fig. 2). This sticker should be placed on the right side of the MotorController. In figure 3, the right location for the sticker is indicated with a dotted outline.



Applying the stickers:

- Make sure the surface is dry and clean.
- Ensure that the surface temperature does not get below 5°C.
- Find the right position for the sticker.
- Remove a small part of the film on the backside of the sticker.
- Place the sticker on the surface, next press a small part of the adhesive layer on the surface.
- Remove the foil carefully and apply the rest of the sticker on the surface.
- Use a needle to make small air holes in the sticker and use the foil to smooth out the sticker.

Maintenance of the safety stickers

The safety stickers on the MotorController give you important and helpful information which will help you to control and maintain the MotorController safely and correctly.

Follow the instructions below to make sure that the stickers will stay at the right position and in the right condition.

- Keep the safety stickers clean and readable. Clean the safety stickers with soap and water. Do not use solvents and/or abrasives that can damage the safety stickers.
- Replace missing or illegible safety stickers.
- Safety stickers are available at Hanskamp. Make sure to use the item numbers for correspondence.

Installation:

1. Check if all the assembly parts are present. The list of materials can be found in annex 2.



Attention! No fastening material is supplied to mount the MotorController on the wall.

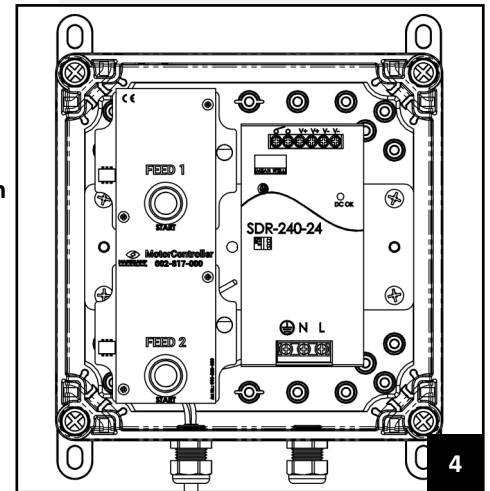


Warning! Turn off the power of the MotorController before the cables can be attached/installed.

2. Determine the right place in the area of the milking parlour for mounting the MotorController on the wall. This place must be equipped with a power supply (230V), accessible and free of moisture. When this place is found, the MotorController can be attached to the wall. Use the mounting feet at the outside of the MotorController (fig. 4). In figure 5 on the next page, an overview is shown of a possible MotorController setup.
3. Mount all the dosators according the enclosed manual. Slide the cables that come from the dosators through the couplings at the bottom of the MotorController into the housing (annex 1). In annex 3 can be seen how the dosator cables should be connected to the MotorController.
4. Connect the signal cable from the feeding computer to the MotorController, as shown in annex 3. When connecting a position switch, use the second scheme in the annex for connecting the cables.

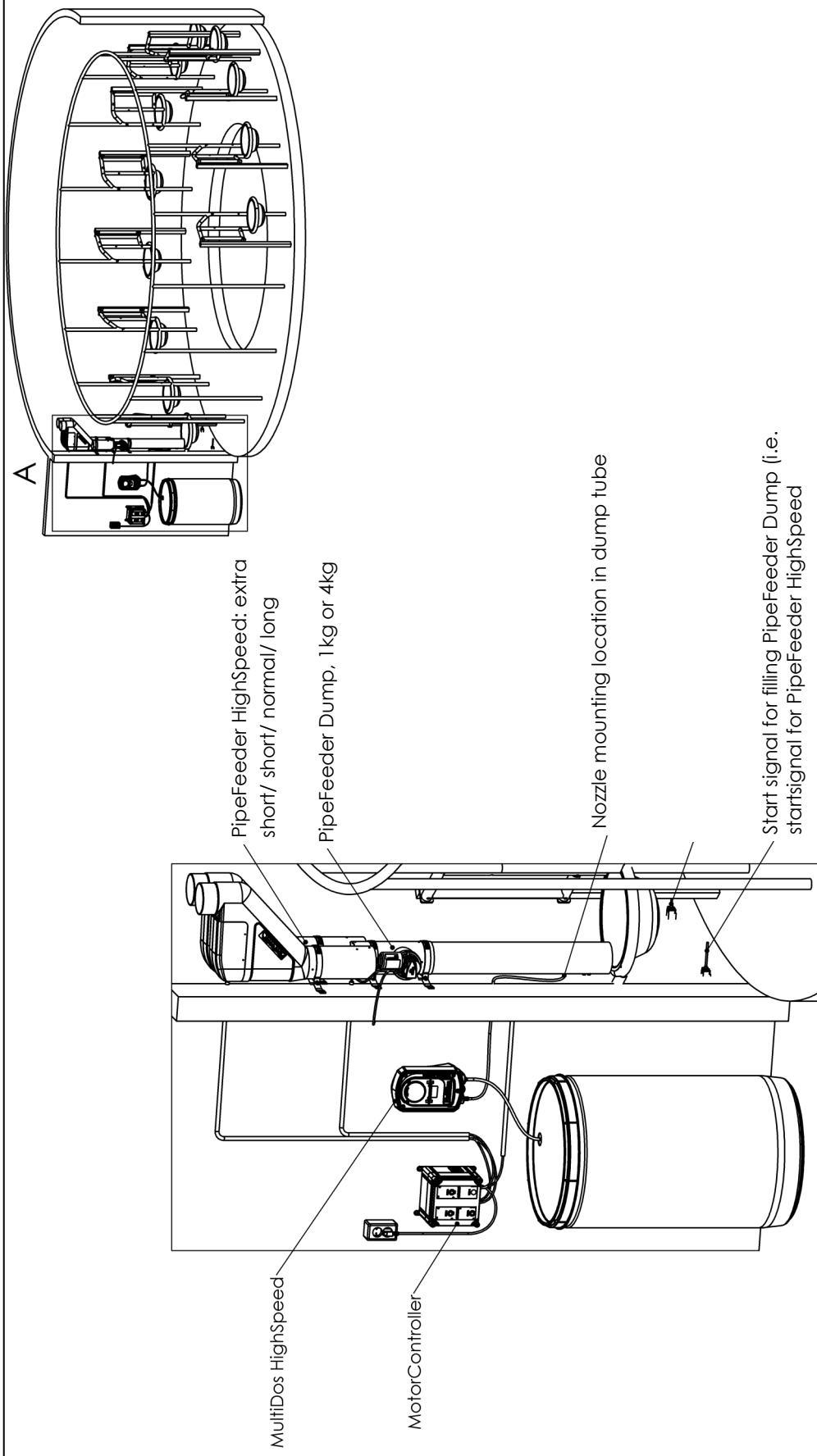


Warning! Always work the cables away very carefully, and keep them out of reach of the cows. Always use a protective tube or a cable tray.



5

Overview of a possible setup: feeding using 2 PipeFeeders, 1 MultiDos., in combination with a PipeFeeder Dump dumpvalve





Warning! For a correct operation, you have to install the dispensers subsequent at the MotorController.

6. Carefully mount the cover on the housing. Make sure cables do not get stuck between the cover and the housing.
7. Insert the plug into the wall socket.



Warning! The MotorController is now under electrical voltage.

8. After successfully setting up the system, the dispensers should be calibrated. Please follow calibration instructions of the corresponding feed system.

Warning! The system can only work correctly if it is calibrated carefully. Repeat the calibration proceedings monthly and every time when the pallet silo is re-filled to make sure the systems works fully correctly.



Warning! Don't perform any assembly or installation operations when the MotorController is in operation.

9. If everything is attached correctly, and your system is calibrated, everything is ready to work.

Warning!



- **Make sure that the person who is operating the MotorController, is always on a safe place**
- **When the MotorController is in operation, it isn't allowed to mount or install at the MotorController.**

10. On the MotorController's housing, per feed type, a push button is mounted. This can be used to manually send a signal to the corresponding feed dosator. The motor of the corresponding feed type will run as long as the button is pressed. Additionally, the LED surrounding the button will light up green, as long as the motor is active.
11. The LED, surrounding the push button, will indicate in which state the corresponding SmartPanel in the MotorController is active. The LED will light up continuously if the feed dispenser is actuated.

Make sure that there is no power at all the components during the installation or maintenance. It is very important that the cover of the MotorController is always mounted correctly to prevent unsafe situations.

It is recommended to let the installation and the maintenance be done by a specialist. The user/owner of the MotorController is expected to follow the advice and guidelines of the manual, in order to keep everybody safe. If these requirements are not fulfilled, the manufacturer cannot be held accountable in any way for personal injury or damage to or caused by the product, and this will be solely the responsibility of the user/owner.

Maintenance:

Calibrate the system every month to prevent deviations. When there is a change in the type of pallets, the system also must be recalibrated.



Warning! When some changes are made in the MotorController in the installation/mounting, make sure the power is switched off to prevent accidents and damage.

Disassembly:

In case of disassembly all parts should be separated on material type and should be processed in the right type of waste management system.



Warning! In case of disassembly make sure to always first switch off the power of the MotorController by taking out the connection cable at the power point.

Overview of the included changes in this installation and operating instruction:

Table 2: included changes

Nr.	Release date	Chapter(s)	Comments
1.0	04/2014		First Release
1.1	08/2014	All	New name and logo added
1.2	03/2015	All	New address
1.3	10/2015	All	General inspection
1.4	10/2016	All	Update to SmartPanel
1.5	7/2017	All	Limit switch removed
1.6	1/2023	Pages 7 + 13	UKCA logo added
1.7	12/2025	Pages 1 + 17	Page 1 Change of place name. Page 17 Change of address Hanskamp.

Warranty limitations:

Excluded from warranty are costs and expenses resulting from:

- Improper use of the equipment, not according to the specifications in the installation and operating instructions.
- The consequences of any intervention by technicians other than mechanics approved by Hanskamp to do certain actions.
- Incidents such as freezing, ice, fire, flooding, inundation or any other form of extreme flooding, lightning.
- Defaults on the electrical system or grounding.
- Damage on the electrical system due to pest and the like.

The warranty does not cover consequential damages not related to the machine itself. All systems are tested. In case of failures, however, Hanskamp is not liable for consequential damages.

Copyright and disclaimer

The information in this publication is intended for information purposes only and is not intended as sales quote. Products may differ to those illustrated. No part of this publication may be reproduced or transmitted without the prior written consent of Hanskamp AgroTech BV. Although this publication has been compiled with the utmost care, Hanskamp AgroTech is not liable for any damage that may result from errors or omissions in this publication. The Dutch installation and operating instruction is the original installation and operating instruction. Translations in other languages, than Dutch, use the Dutch installation and operating instruction as source document. Hanskamp AgroTech accepts no liability for differences between translations. If there are any doubts about the content and the accuracy of the translated installation and operating instructions, the Dutch installation and operating instructions is the authoritative document.

Declaration for completed machinery IIA
(According to annex VIIA of machine directive 2006/42/EC, for completed machinery)

We,
Hanskamp AgroTech BV
Broekstraat 17
7009 ZB Doetinchem
Nederland

Authorised compiler(s) of the technical file:

H.J. Hanskamp

State, entirely under our own responsibility, that the product:

MotorController, Art. Nr.: 002-816-000 up to 002-819-000
Control unit for various feeding systems of Hanskamp AgroTech BV.

To which this declaration pertains, does meet the stipulations of the following directive(s):

- Machine Directive 2006/42/EG

And completely or partially meets the following essential requirements and that the relevant technical documents were drawn up in accordance with **Annex VIIA**. The product also complies with the stipulations in the following annex(es):

NEN-EN-ISO 12100
NEN-EN-IEC 60204-1
NEN-EN-IEC 13849-1

We call your attention to the fact that where a MotorController has not been installed or has not been installed in accordance with safety measures in these installation and operating instructions, this declaration of stipulations is null and void and so no rights can be derived from this declaration.

The Netherlands, Doetinchem 01-12-2016

H.J. Hanskamp



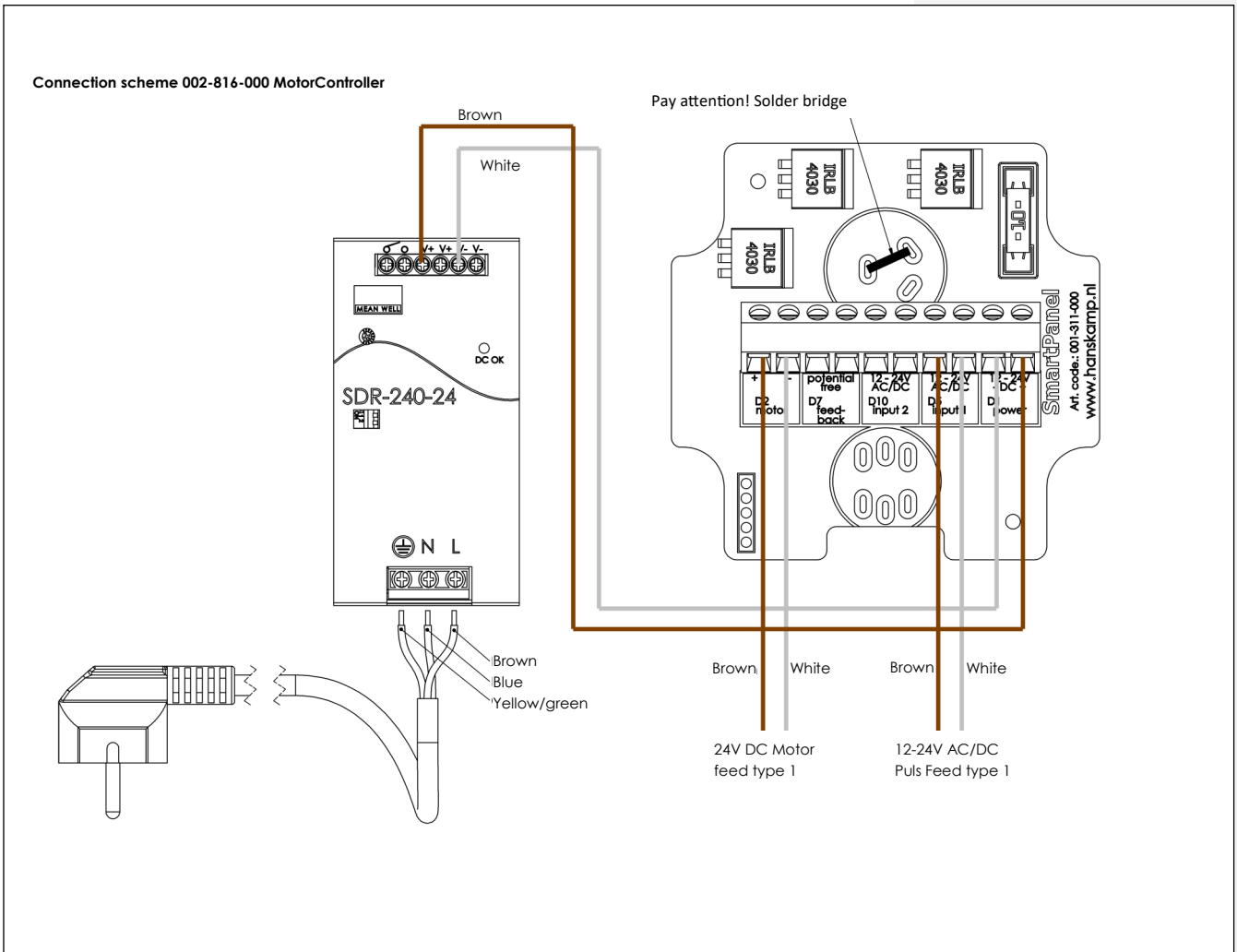
Annex 2: Description spare parts MotorController:

Article number	Description	Amount
001-164-000	Connection cable 5 metre. for condense drain (230V)	1
001-248-000	Mounting cable brown 1mm*	1
001-256-000	Mounting cable white 1mm*	1
001-264-000	Push button LED green*	4
001-311-000	Control PCB SmartPanel*	4
001-347-000	Tap bolt M3x6 a2 cross recessed*	16
001-829-000	Cable gland M16*	4
001-832-000	Blind coupling M16*	1
001-836-000	Ferrule 1,0mm red*	16
001-984-000	Power Supply SDR-240 24VDC 10A	1
001-989-000	Housing 200x200x132mm	1
001-990-000	Mounting plate for Power supply	1
002-029-000	Plastic spacer, 22mm, M3*	8
002-029-010	Fuse 10A slow 58V Low Profile MINI*	4
010-242-000	Serial number sticker MotorController incl. CE	1
010-269-000	MotorController sticker feed type 1 & 2	1
010-270-000	MotorController sticker feed type 3 & 4**	1

* Amount may vary between 1 and 4 (depending on the number of feeding types)

** Only with article number 002-818-000 and 002-819-000 (3 and 4 feeding types)

Annex 3: Connection scheme MotorController



Hanskamp AgroTech BV
Xenonstraat 6
7031 HX Wehl
The Netherlands
Tel: +31 (0)314 - 393 797
www.hanskamp.com